



PÔLE PERSPECTIVES INTERNATIONALES

USING EU-SILC FOR DEMOGRAPHIC ANALYSIS IN EUROPE

Journée d'étude organisée
par l'unité de recherches
démographie économique.

ORGANIZING COMMITTEE

Aurélien Dasré (UPN/GTM-
Cresppa/INED), Angela Greulich
(Paris I/CES/INED)

INFORMATIONS

Ined, 133 Boulevard Davout,
75020 Paris

MÉTRO :

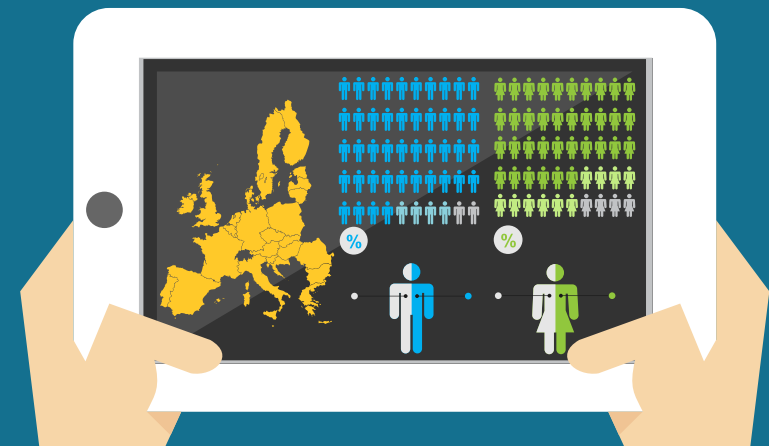
Porte de Montreuil (ligne 9)
Porte de Bagnolet (ligne 3)

TRAM :

T3b arrêt Marie de Miribel

The presentations will be
in English

Entrance is free, subjected
to availability and
registration at:
www.ined.fr



INED
SALLE
SAUVY
133, BD
DAVOUT
75020
PARIS

Registration required at
www.ined.fr

FRIDAY
29 JUNE
2018

PROGRAM

Summary

The European Union Statistics of Income and Living Conditions (EU-SILC) is a unique data source, due to its' country coverage, the large set of socio-economic variables it provides and the possibility to merge household members. EU-SILC is not specifically designed to study demographic issues, but is becoming increasingly popular for demographic analysis. This conference aims to present different ways to use the EU-SILC to study fertility, marriage, and other aspects of demographic interest. The first part of the conference will be focused on the presentation of the dataset and on the quality of demographic measures. The second part will present demographic research based on EU-SILC.

9h00-9h30: Registration, Welcome Breakfast

9h30-9h45: Opening by Magda TOMASINI (INED)

9H45-12H00: EU-SILC: INTRODUCTION, QUALITY, POSSIBILITIES

9h45-10h15: A. GREULICH (Paris I/CES/INED),
EU-SILC presentation

10h15-10h45: P. LAMARCHE (Insee),
The French SILC module SRCV: harmonization and integration issues

10h45-11h: Coffee break

11h00-11h30: M. IACOVOU (University of Cambridge),
Using EU-SILC data for cross-national analysis: strengths, problems and recommendations

11h30-12h00: A. DASRÉ (UPN/GTM-CRESPPA/INED),
Fertility Analysis with EU-SILC: A Quantification of Measurement Bias

12h00- 13h00: Lunch break (Buffet)

13H00- 17H00: USING EU-SILC FOR DEMOGRAPHIC ANALYSIS IN EUROPE

13h00-13h30: M. RENDALL (University of Maryland, USA),
Employment Impacts on Entry to Parenthood in Different Family-Policy Regimes

13h30-14h00: M. KLESMENT (Tallinn University),
Cross-country analysis of second births using EU-SILC data

14h00-14h30: I. GIORGETTI (Marche Polytechnic University),
Job Instability and Fertility during the Economic Recession: EU Countries

14h30- 15h00: C. PRONZATO (University of Turin),
Fertility decisions and alternative types of childcare

Coffee break 15h00-15h30

15h30-16h00: A. GREULICH (Paris I/CES/INED),
The later, the more? An analysis of the link between the timing and the intensity of births

16h00-16h30: N. NITSCHKE (Wittgenstein Centre/VID),
Partners' Educational Pairings and Fertility across Europe

16H30-17H00: A. MATYSIAK (Wittgenstein Centre/VID),
Fatherhood premium in the comparative European perspective

17H00-17h30: P. BAIZAN (Pompeu Fabra University),
Welfare regime patterns in the social class-fertility relationship: second births in France, Italy, Norway and United Kingdom

17h30-18h: Conclusion by Louis-André VALLET (Sciences Po Paris/ OSC)